

SURFCOM FLEX

Small

Advantage 1 Anywhere!

- Easy to carry by compact design
- Use anywhere
- Output quickly by built-in printer

Easy

Advantage 2 Anybody!

- Easy to recognize by large color LCD
- Easy operation by large color LCD

Flexible

Advantage 3 Any measurement

- Select tracing driver according with workpiece. Measure flexible, from simple measurement to waviness measurement.
- Use current tracing driver* combination with FLEX amplifier.

*Tracing driver for E-35A/B, E-40A, E-45A and S130A.

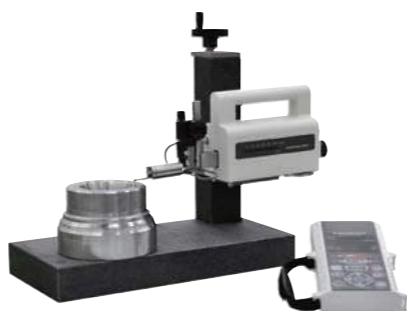
Select tracing driver according with workpiece

SURFCOM FLEX 50A Small genuine type



Measurement method : Skid/Skidless measurement
Measurement range : X-axis 50mm (Tracing driver)
Measurement speed : 0.15~1.5mm/s

Model combination with small genuine type 50mm tracing driver of S130A.
Small tracing driver, available skidless measurement and waviness measurement.
Achieve class highest straightness accuracy 3um/50mm
Easy levelling adjustment by tilting support function



SURFCOM FLEX 50A combination with optional compact stand.

SURFCOM FLEX 40A Retract type



Model combination with retract type tracing driver of Handysurf.
Pickup retract at the stand by or the end of measurement to protect the damage against the stylus and pickup. Also it is suitable for built-in measurement system.

Measurement method : Skid measurement
Measurement range : X-axis 12.5mm (Tracing driver)
Measurement speed : 0.6mm/s

SURFCOM FLEX 45A Side trace type



Model combination with side trace type tracing driver of Handysurf.
This type is suitable to measure narrow surface like, pin and journal of crankshaft.

Measurement method : Skid measurement
Measurement range : X-axis 4mm (Tracing driver)
Measurement speed : 0.3mm/s

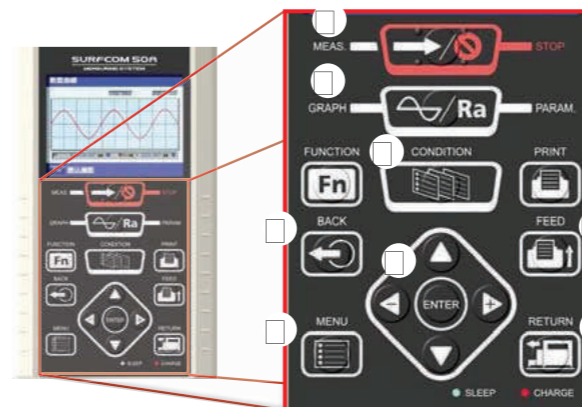
SURFCOM FLEX 35B Standard type



Model combination with standard tracing driver of Handysurf.
Measure any orientation, flat, vertical, tilt and ceiling surface.

Measurement method : Skid measurement
Measurement range : X-axis 12.5mm (Tracing driver)
Measurement speed : 0.6mm/s

Small & Lightweight design, Potable roughness analysis data processor with built-in printer.



↳ Able to operate in hand

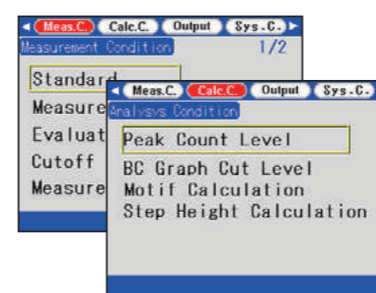
Arrange 3 frequently used key at upper side of operation panel

- MEAS. / STOP : Start/Stop key
- GRAPH / PARAM : Display graph/Parameter key
- CONDITION : Measurement condition setting key

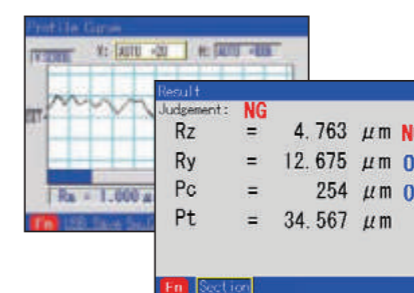
Arrange other key at bottom of operation panel

- Up/down/Left/right · ENTER : Move/Select key
- BACK : Return upper menu key
- MENU : Setting menu display key
- PRINT/ FEED : Print/Feed key
- RETURN : Return tracing driver key (for FLEX 50A)

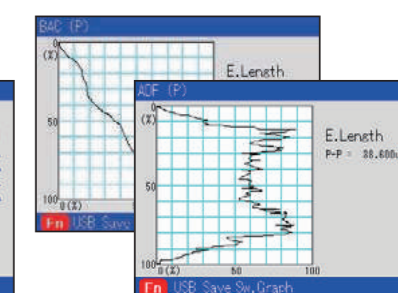
3.5" Color LCD display shows measuring result and condition clearly.



Menu screen for measuring and analysis condition



Curve and parameter of measurement result



Graph of measurement result (BAC and ADF)

Correspond USB memory and USB data communication



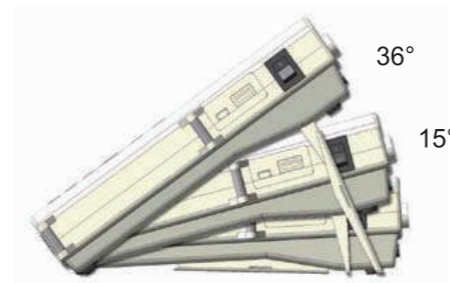
Save up to 5 measurement condition and 30 measurement result into internal memory of Surfcom FLEX.
Additionally USB memory can be connected in Surfcom FLEX to save more data.
(USB memory in picture is optional)

Mini USB connector is equipped with Surfcom FLEX and able to connect with PC. The data can be sent to PC and various analysis is available with ACCTee software.



Built-in tilt stand

Surfcom FLEX can be tilted at 15deg. or 36deg. and can be fold when it is not necessary.



Attachment holder for handysurf tracing driver (Optional)



Tracing driver of Handysurf E35B or E40A can be attached in Surfcom FLEX with optional attachment holder.
It makes easier to store tracing driver and to carry.

Portable Surface Texture Measuring Instrument

SURFCOM FLEX

Model		SURFCOM FLEX			
		-50A	-35B	-40A	-45A
Measuring Range	Z-axis(vertical)	±400µm			
	Drive axis	X-axis 50mm	X-axis 12.5mm	Y-axis 4.0mm	
Resolution	Z-axis(vertical)	0.00016µm/±4µm~0.016µm/±400µm			
Analysis items	Standards	Complies with JIS-2001,JIS-1994,JIS-1982,ISO-1997,DIN-1990,ASME-1995,CNOMO			
	Parameters	JIS-2001	Ra,Pa,Pq,Pt,Rz,Rz.J,Rzmax,Rq,Rp,Rt,R3z,RSm,Pc,AVH,Hmax,Hmin,Pmr,Rmr,Rk,Rpk,Rvk,Mr1,Mr2,VO,K		
		Motif	R,Rx,AR,W,Wx,AW,Wte		
	Evaluation curves	Section profile curve, roughness curve, ISO13565 special curve, roughness motif curve, waviness motif curve, envelope waviness curve			
		Filterd waviness profile, Waviness profile	-		
Characteristics graphs	Bearing area curve, Amplitude distribution(ADF)curve				
Filter type	Cut-off	Gaussian filter , 2RC filter(phase correct type) , 2RC filter(non phase correct type)			
	Cut-off values	Ec:0.08,0.25,0.8,2.5,8,25mm Es:0.25,0.8,2.5,8,25µm	Ec:0.08,0.25,0.8,2.5mm Es:2.5,8µm	Ec:0.08,0.25,0.8 Es:2.5µm	
Evaluation length		0.1~50mm(unit:0.1mm)	0.4~12.5mm(unit:0.1mm)	0.4~4.0mm(unit:0.1mm)	
Drive speed		0.15~1.5mm/s	0.6mm/s	0.3mm/s	
Pickup	Movement system	Small genuine type	Handy standard type	Handy retract type	Handy side tracing type
	Sensing method	Differential transducer	Differential inductance(displacement type)		
	Measuring force	0.75mN or less			
	Stylus	60° cone, 2µmR, Diamond	90° cone, 5µmR, Diamond ,Skid Sapphire,32mmR(trace direction)		
Dimensions, weight & etc.,	Power source	Built-in rechargeable battery(charged from AC adapter),Charging time13hour Power consumption about 30VA (Measurement is possible about 600 times at the full charge.)			
	External dimensions & Weight	FLEX(Amplifire):132(W)×58(D)×214(H)mm ,About 90g			
Standard accessories	Reference specimen(E-MC-S24B),AC adapter,Hand belt,Recording paper(E-CH-S25A),Instruction manual				
	Pickup(E-DTSE19A), Stylus(DM43801), Tracing driver cable(E-SC-S517A)	Pickup(E-DTSM10A), Rear adjustment piece(E-WJ-S64A), Tracing driver cable(E-SC-S518A)	Pickup(E-DTSM39A), Stand for specimen(E-WJ-S558A), V type nose piece(E-WJ-S536A), Tracing driver cable(E-SC-S519A)		



For more details contact:

Carl Zeiss India (Bangalore) Pvt. Ltd.

22, Kensington Road, Ulsoor, Bangalore - 560 008.

Tel: +91 80 4343 8000 Fax: +91 80 2556 8104 E-mail: imtindia@zeiss.co.in

Carl Zeiss Tech Centre

Bangalore: Tel: +91 80 2520 9882 E-mail: zeissindiatechcentre@zeiss.co.in

Pune: Tel: +91 20 6511 0600 E-mail: pune@zeiss.co.in

■Ahmedabad ■Chennai ■Delhi ■Hyderabad ■Kolkata ■Mumbai ■Pune

www.zeiss.co.in

Results you can trust

